



**SENTRY  
DOORS**  
The secure choice for fire safety

# Certification Portfolio

The Secure Choice for Fire Safety



[www.sentrydoors.co.uk](http://www.sentrydoors.co.uk)

## SCOPE OF CERTIFICATION

### Fire Door Scheme to BS 476: Part 22 or BS EN 1634-1

Manufacturer of Timber Fire Doors in accordance with the BM TRADA Q-Mark Scheme requirements



**This document remains the intellectual property of BM TRADA.**

**It shall not be made available to another person or company without the prior written permission of BM TRADA.**

**This scope of certification supports  
Certificate Number  
006/879**

The validity of this scope document should be checked against the current schedule of the Company's certification listed on the BM TRADA website [www.bmtrada.com](http://www.bmtrada.com).

**Sentry Doors Limited**  
Brooklands Road  
Carcroft  
Doncaster  
DN4 7BA

Completed: **P. Wren**

Checked: **D. Kitchin**

Issue: 8 Date: **29 July 2021**

Details: Updated Revision status of WF403069 and removal of Associated documents

#### **Primary Field of Application (FoA) Reports (owned by this certified company)**

Primary FoA reports owned by this Q-Mark certified company are listed on the Q-Mark certificate along with the latest revision status. They are either used in isolation, or can be used in conjunction with an appropriate associated document that is listed below, providing that the FoA report allows it and that both documents are compatible with each other. Where more than one primary FoA is listed for the same doorset type, they cannot be mix and matched, only one FoA is to be chosen and followed precisely.

FoA Report	Rev	Owned by Certified Company named on this scope	Doorset Description	Rating	Test Type	Audit Test
Chilt/A13067	E	Sentry Doors Ltd	30 Minutes Fire Resistant Doorsets (Glazed and unglazed)	30min	BS476 Part 22	2016
WF 403069	B	Sentry Doors Ltd	60 Minutes Fire Resistant Doorsets (Glazed and unglazed)	60min	BS476 Part 22	2019

#### **Primary Field of Application Reports (owned by and cascaded by a System Supplier)**

Primary FoA reports owned by a System Supplier are listed on the Q-Mark certificate. The revision status of each FoA can be verified on the BM TRADA website under each System Supplier's certification entry. They are either used in isolation, or can be used in conjunction with an appropriate associated document that is listed below, providing that the FoA report allows it and that both documents are compatible with each other.

Where more than one primary FoA is listed for the same doorset type, they cannot be mix and matched, only one FoA is to be chosen and followed precisely.

FoA Report	System Supplier owner of Assessment Report	Doorset Description	Rating	Test Type	Valid ✓✗	Audit Test
FEA/F98164	Pacific Rim Wood Ltd	Flamebreak 30 (Glazed and unglazed)	30min	BS476 Part 22		
Chilt/A02141	Pacific Rim Wood Ltd	Flamebreak 60 (Glazed and unglazed)	60min	BS476 Part 22		
Chilt/A01204	Halspan Ltd	Optima 30 (Glazed and unglazed)	30min	BS476 Part 22		

Chilt/A01205	Halspan Ltd	Optima 60 (Glazed and unglazed)	60min	BS476 Part 22		
Chilt/A13242	Halspan Ltd	Halspan XT30 and IT30 - 30 minute fire resisting doorsets (Glazed and Unglazed)	30min	BSEN 1634-1		
Chilt/A13227	Halspan Ltd	Halspan XT60, IT60, XT60 Head Rail and XT60R (formerly Pro Tech 60) 60 minute fire resisting doorsets (Glazed and Unglazed)	60min	BSEN 1634-1		
Chilt/A02066	Falcon Panel Products Ltd	Strebord® 35+ Doorsets (Strebord® 35 blank only) (Glazed or Unglazed)	30min	BS476 Part 22		
Chilt/A02066	Falcon Panel Products Ltd	Strebord® 38+ Doorsets (Strebord® 38 blank only) (Glazed or Unglazed)	30min	BS476 Part 22		
Chilt/A02066	Falcon Panel Products Ltd	Strebord® 44 Doorsets (Strebord® 44 blank only) (Glazed or Unglazed)	30min	BS476 Part 22		
Chilt/A02067	Falcon Panel Products Ltd	Strebord® 54 Doorsets (Glazed or unglazed)	60min	BS476 Part 22		
BMT/CNA/F15159	Falcon Panel Products Ltd	Stredor® 30 Minute Fire Resisting Doorsets (Glazed and unglazed)	30min	BS476 Part 22		
WF377027	Falcon Panel Products Ltd	Stredor® 60 Minute Fire Resisting Doorsets (Glazed and unglazed)	60min	BS476 Part 22		
Chilt/A09104	Falcon Panel Products Ltd	Strebord® 44 Panelled Doorsets (Glazed and unglazed)	30min	BS476 Part 22		
Chilt/A10152	Falcon Panel Products Ltd	Strebord® 54 Panelled Doorsets (Glazed and unglazed)	60min	BS476 Part 22		
WF407090	Falcon Panel Products Ltd	Strebord® 44 30 minute Front Entrance Doorsets (Glazed or Unglazed)	30min	BS476 Part 22		
WF407090	Falcon Panel Products Ltd	Strebord® 54 30 minute Front Entrance Doorsets (Glazed or Unglazed)	30min	BS476 Part 22		
WF407090	Falcon Panel Products Ltd	Stredor® 44 30 minute Front Entrance Doorsets (Glazed or Unglazed)	30min	BS476 Part 22		
WF407090	Falcon Panel Products Ltd	Stredor® 54 30 minute Front Entrance Doorsets (Glazed or Unglazed)	30min	BS476 Part 22		
WF428364	Falcon Panel Products Ltd	Stredor® 44 E30 FED (EXAP) Fire Resisting and Smoke Control Doorsets (Glazed or Unglazed)	30min	BSEN 1634-1		

WF428364	Falcon Panel Products Ltd	Stredor® 44 EI30 FED (EXAP) Fire Resisting and Smoke Control Doorsets (Glazed or Unglazed)	30min	BSEN 1634-1		
WF428387	Falcon Panel Products Ltd	Stredor® 44 E30 FED (EXAP) 30 Minute (integrity) Fire Resisting Doorsets (Glazed or Unglazed)	30min	BSEN 1634-1		
WF428388	Falcon Panel Products Ltd	Stredor® 44 EI30 FED (EXAP) 30 Minute (integrity and insulation) Fire Resisting Doorsets (Glazed or Unglazed)	30min	BSEN 1634-1		

**Winkhaus Assessments – cannot be used in conjunction with any ‘Associated Documents’ noted below**

Assessment/ Test Report	Owner of Assessment/ Report	Doorset Description	Rating	Test Type
BMT/CNA/F15084	Winkhaus UK Ltd	Winkhaus Timber Frame with Halspan Blank	30min	BSEN 1634-1
BMT/CNA/F15084	Winkhaus UK Ltd	Winkhaus Timber Frame with Halspan Blank	60min	BSEN 1634-1

**Test Reports**

Test reports are listed on the Q-Mark certificate. They cannot be used in conjunction with any primary FoA reports, other test reports or associated documents. They must be followed precisely without any deviation whatsoever.

**No specification or parameter changes are allowed at all from that stated within the test report such as size, shape, design, glazing, leaf/frame specification, hardware etc.**

Test Report	Owner of Test Report	Doorset Description	Rating	Test Type	Test Lab (Accreditation No.)	Audit Test
WF 386073 (Doorset A)	Sentry Doors Ltd	60 Minutes Fire Resistant Doorset (Unglazed)	60min	BS476 Part 22	BMT (1762)	
WF 386073 (Doorset B)	Sentry Doors Ltd	60 Minutes Fire Resistant Doorset (Unglazed)	60min	BS476 Part 22	BMT (1762)	
Chilt/RF11065 AR1	Sentry Doors Ltd	60 Minutes Fire Resistant Doorset (Glazed)	60min	BS476 Part 22	BMT (1762)	
WF 387892 (Doorset A)	Sentry Doors Ltd	60 Minutes Fire Resistant Doorset (Glazed)	60min	BS476 Part 22	BMT (1762)	
WF 327444	Sentry Doors Ltd	30 Minutes Fire Resistant Doorset (Glazed)	30min	BS476 Part 22	WF (0249)	
WF415699	Sentry Doors Ltd	30 Minutes Fire Resistant Doorsets (Glazed)	30min	BS476 Part 22	BMT (1762)	
WF415700	Sentry Doors Ltd	30 Minutes Fire Resistant Doorsets (Glazed)	30min	BS476 Part 22	BMT (1762)	

WF 420131	Sentry Doors Ltd	60 Minutes Fire Resistant Doorsets (Unglazed)	60min	BS476 Part 22	BMT (1762)	2019
-----------	------------------	--	-------	---------------	------------	------

**Associated documents**

Associated documents are not shown on a Q-Mark certificate. They are only to be used in conjunction with any appropriate **primary FoA reports** listed above. Any doorset configuration or size parameters etc. stated in the primary FoA reports listed above shall take priority unless otherwise specifically stated in the associated document.

Document Ref.	Rev	Owner of Document	Document Description	Valid ✓✗
-	-	-	-	-

**Pre-certification Tests**

Pre-certification test reports are not listed on the Q-Mark certificate. They are for reference only and have been used to support the initial certification or change of scope.

Test Report	Doorset Description	Rating	Test Type	Test Lab (Accreditation No.)	Date
-	-	-	-	-	-



## SCOPE OF CERTIFICATION

### Enhanced Security Doorset to PAS24:2016 (with Fire Performance)

Manufacturer of Enhanced Security Doorsets with additional certified Fire Performance  
in accordance with BM TRADA Q-Mark Scheme requirements.  
(Check with Secured by Design to ensure compliance with any additional requirements)

#### Sentry Doors Ltd

Brooklands Road  
Carcroft  
Doncaster  
DN6 7BA

**bmtrada**

Proud to be part of  element

This scope of certification supports

**Certificate Number 050/097**

The validity of this scope document should be checked against  
the current schedule of the Company's certification listed on the  
BM TRADA website [www.bmtrada.com](http://www.bmtrada.com).

Completed: **P. Wren**



Checked: **P. Andrews**



Issue: **3**

Date: **17 August 2020**

Details: **update to Fire assessment dated 1 July 2020**

Product Name:

**Sentry Doors 44mm Timber Range  
Inward and Outward Opening Single  
leaf Timber Doorset**

**This document remains the intellectual property  
of BM TRADA. It shall not be made available to  
another person or company without the prior  
written permission of  
BM TRADA.**

**PAS 24:2016 - Classification 'D'**

**FD30 Fire Certification  
BM TRADA Q-Mark Certificate 006/879  
Global Assessment Ref  
Chilt/A13067 Rev E (1<sup>st</sup> July 2020)**

**This document remains the intellectual property of BM TRADA. It shall not be made available to another person or company without the prior written permission of BM TRADA.**

All Q-Mark certified doorsets must have evidence to demonstrate that the profiles, components and manufacturing procedures used meet the requirements of the appropriate material specific standards:  
BS 644 (timber); BS 4873 (aluminium); BS 6510 (steel); BS 7412 (PVC-U); BS 8529 (composite).  
Any changes required to the specifications or parameters within this scope must be agreed by Warringtonfire Testing and Certification Limited relative to both the Enhanced Security certification and Fire certification constraints prior to acceptance.

#### Weather rating

BS6375 part 1 Exposure category	Outward Opening - <b>800U</b> (on largest specimen)
	Inward Opening - <b>800X</b> (on largest specimen)
	Inward Opening – 800U (on largest specimen with AM3 Threshold)

#### Maximum door leaf size

Open in (not including frame)	926mm wide x 2040mm high
Open out (not including frame)	926mm wide x 2040mm high

### Door leaf – Flamebreak 44mm

	Material / type	Dimensions (mm)	Nom. Density (kg/m <sup>3</sup> )
Stiles *	Mixed tropical hardwood	36 x 35	610
lock block	Mixed tropical hardwood	36 x 35	610
Rails	Mixed tropical hardwood	36 x 35	
Core	Albisia Falcata	Vertical lamels 44 x 10, centre horizontal lamels 42 x 13	230-360
Facings	Plywood	4 thick	610
Lippings	Sapele	Minimum 6 thick Maximum 11 thick	Minimum 640
Lipping Adhesive	Polyurethane / Urea Formaldehyde	-	-
Rain deflector	Stormguard 04CP1980950	-	-

\*Note: Stiles must not be removed during re-sizing of door leaf.

### Door frame

	Material / type / location	Dimensions (mm)	Nom. Density (kg/m <sup>3</sup> )
Head/ Jamb	Meranti	56 x 92	575 minimum
	Sapele		640 minimum
	Engineered Redwood		510 minimum
Rebate	Integral	18 x 49	-
Threshold	Stormguard Slimline	15 high x 62 deep	-
	Stormguard AM3	15 high x 62 deep	-
Joints	Mortise and tenon joint fixed with 2No. No.8 x 100mm wood screws per joint	-	-

### Perimeter sealing details

	Make / type	Size (mm)	Location
Door edges	None		
Frame reveal	Aquamac 21	10	Frame rebate upstand
Seal continuity	Seals Interrupted by hardware		

### Intumescent

	Make / type	Size (mm)	Location
Frame reveal	Pyroplex Rigid Box Seal PO8712 or Lorient 617 1504DS	15 x 4	Centre of frame reveal head and jambs
Hinges	Norseal N0905 Graphite	0.5 thick	Under hinge blades
Lock forend	Norseal intumescent sheet	0.5 thick	Under forend
Lock case	Norseal intumescent sheet	0.5 thick	Encasing lock body
Lock keep	Norseal intumescent sheet	0.5 thick	Under lock keep
Letterplate	Yale Intumescent Kit supplied with component		
Closer	Norseal intumescent sheet	0.5 thick	Under forend

## Hardware

		Make / type / positions	Size (mm)	Fixing details (dimensions in mm)
Centre Hinges		2 No. Monarch M433 Class 13 S/S Roller Bearing Butt Hinge	102 x 32 blade size	5 x 30 screws included with hinge to leaf and frame
Top and bottom hinges		Monarch M433 Class 13 S/S Roller Bearing Butt Hinge with integral dog bolt	102 x 32 blade size 12 Diameter bolt	
Locking mechanism Option 1		Yale Multipoint; Ref; YS170	2040 x16 faceplate	No.8 x 30mm wood screws
Keeps	Upper & lower	Yale hook keep	150 x 16	8 x 30mm wood screws into frame
	Centre	Yale centre keep	210 x 16	8 x 30mm wood screws into frame
Locking mechanism Option 2		Winkhaus AV2 AV2E Ref AV2-F 2070/45 92/8 M2	20 wide	4.2 x 50 screws into leaf
Keeps	Upper & lower	2No. Winkhaus F24-908W (Ref: 4933948)	24 x 175	4No. 4.2 x 30 screws into frame
	Centre	1No. Winkhaus F24-908W (Ref: 4937125)	24 x 240	4No. 4.2 x 30 screws into frame
Cylinder Lock / Cylinder Protection / Handle		<u>Tested configuration</u> Handle: HOPPE Atlanta Security Lever Handle Set (3683468) Cylinder: Yale Euro Profile Thumb Turn Cylinder (KMT3030) Cylinder protection: Integral to handle		
		Or an alternative cylinder and handle combination can be used that meets the requirements of PAS 24:2016 as stated below: <ul style="list-style-type: none"> <li>• Cylinder certified to BS EN 1303:2015 including Cylinder Vulnerability Assessment</li> <li>• Cylinder certified to TS 007:2014 – 3 star level</li> <li>• Cylinder certified to Sold Secure – Gold or Diamond level</li> <li>• Cylinder certified to PAS 24:2016 Annex A</li> </ul> If cylinder used is 1 star level to TS 007:2014, additional protection is required from the handle and/or additional cylinder protection to achieve a total minimum 3 star level: <ul style="list-style-type: none"> <li>• Combination of handle, cylinder &amp; cylinder protection (if applicable) to have a minimum combined total of 3 star rating to TS 007:2014 (e.g. 1 star cylinder + 2 star handle <u>or</u> 1 star cylinder + 2 star cylinder protection)</li> </ul>		
Door closer		Samual Heath Perkomatic R100 140 x 28 (forend size) Dorma TS97 340x 50 x 40 body size Dorma TS93 275 x 60 x 53 body size Dorma TS92 281 x 65 x 47 body size Rutland TS11205 257 x 68 x 43 body size		
Letterplate		Yale Postmaster TS008 Letterplate – FD30 Fire Rated <ul style="list-style-type: none"> <li>• Installation height between 400mm – 1200mm</li> </ul>		
Door viewer		Yale Ref 314 Ref UKFDDOORVIEWCHR Note – Not assessed as part of PAS24 – please note compliance with TS002 would be required order to satisfy Secured by Design specification	15 Dia	Fitted minimum 100 from edge of door leaf



## Glazing – Door Leaf

		Make / type / size (mm)	Location (dimensions in mm)
Glass configuration		21.1mm thick Pyrobel 16EG glazing panel	
Max sight size		Width – 538	
		Height -1642	
Max area		As permitted by Global Assessment 0.61m <sup>2</sup>	
Glazing Cassette	Internal	Meranti; 45 x 17 – Density minimum 550	
	Internal	Bead capping – hardwood	'D' moulding 17 wide x 5 thick
	External	Meranti; 45mm x 23mm – Density minimum 550	
Glazing Perimeter		Mann McGowan closed cell foam tape 15 wide x 4 thick	Fitted between the glass and bead on both faces
Bead fixing	Internal	Screwed through core with 8 x 50 wood screw	
	External	Glued and screwed through core with 8 x 25 wood screw	
Sealants	Internal	Hodgson Firestrip 30 butyl compound. Back filled with silicone.	
	External	10 x 1 Double sided tape	

## SCOPE OF CERTIFICATION

### Enhanced Security Doorset to PAS24:2016 (with Fire Performance)

Manufacturer of Enhanced Security Doorsets with additional certified Fire Performance  
in accordance with BM TRADA Q-Mark Scheme requirements.  
(Check with Secured by Design to ensure compliance with any additional requirements)

#### Sentry Doors Ltd

Brooklands Road  
Carcroft  
Doncaster  
DN6 7BA

**bmtrada**

Proud to be part of  element

This scope of certification supports

**Certificate Number 050/097**

The validity of this scope document should be checked against  
the current schedule of the Company's certification listed on the  
BM TRADA website [www.bmtrada.com](http://www.bmtrada.com).

Completed: **P. Wren**



Checked: **P. Andrews**



Issue: **1**

Date: **17 March 2021**

Details: **First issue of scope**

Product Name:

**Sentry Doors 54mm Timber Range  
Inward and Outward Opening Single  
leaf Timber Doorset**

**This document remains the intellectual property  
of BM TRADA. It shall not be made available to  
another person or company without the prior  
written permission of  
BM TRADA.**

**PAS 24:2016 - Classification 'D'**

**FD60 Fire Certification  
BM TRADA Q-Mark Certificate 006/879  
Global Assessment Ref  
WF403069 Revision B (30<sup>th</sup> January 2020)**

All Q-Mark certified doorsets must have evidence to demonstrate that the profiles, components and manufacturing procedures used meet the requirements of the appropriate material specific standards:  
BS 644 (timber); BS 4873 (aluminium); BS 6510 (steel); BS 7412 (PVC-U); BS 8529 (composite).  
Any changes required to the specifications or parameters within this scope must be agreed by Warringtonfire Testing and Certification Limited relative to both the Enhanced Security certification and Fire certification constraints prior to acceptance.

#### **Weather rating**

BS6375 part 1 Exposure category	<b>800U</b> (on largest specimen)
---------------------------------	-----------------------------------

#### **Maximum door leaf size**

Open in (not including frame)	926mm wide x 2040mm high
Open out (not including frame)	926mm wide x 2040mm high

### Door leaf – Flamebreak 54mm

		Material / type	Dimensions (mm)	Nom. Density (kg/m <sup>3</sup> )
Top Rail		Agathis or mixed tropical hardwood	75 x 42	610
Stiles *		Agathis or mixed tropical hardwood	36 x 42	610
lock block		Mixed tropical hardwood	36 x 42	610
Bottom rail		Agathis or mixed tropical hardwood	36 x 42	
Core	Outer layers	Parasorianthes falacateria or Albisia falcatta	Vertical lamels 45 x 13.5	220 - 360
	Inner layers	Mixed tropical hardwood	Horizontal lamels 28 x 15	480
Facings		Plywood	6 thick	610
Lippings		Sapele	8 to 13 thick	640
Lipping Adhesive		Polyurethane or Urea Formaldehyde	-	-

\*Note: Stiles must not be removed during re-sizing of door leaf.

### Door frame

		Material / type / location	Dimensions (mm)	Nom. Density (kg/m <sup>3</sup> )
Head/ Jamb	Meranti	Sapele	56 x 92	640 minimum
	Sapele			
Rebate	Integral		18 x 49	-
Threshold	None		-	-
Joins	Mortise and tenon joint fixed with 2No. No.8 x 100mm wood screws per joint		-	-

### Perimeter sealing details

	Make / type	Size (mm)	Location
Door edges	None		
Frame reveal	Aquamac 21	10	Frame rebate upstand
Seal continuity	Seals Interrupted by hardware		

### Intumescent

	Make / type	Size (mm)	Location
Frame reveal	2No Pyroplex Rigid Box Seal PO8712	15 x 4	4mm each side of centre of frame reveal head and jambs
Hinges	Interdens, Lorient MAP paper, Pyrostrip 300 or Therm-A-Strip	1 thick	Under hinge blades
Lock forend	Norseal Graphite	1 thick	Under forend
Lock case	Norseal Graphite	1 thick	Encasing lock body
Lock keep	Norseal Graphite	1 thick	Under lock keep
Letterplate	Yale Intumescent Kit supplied with component		
Closer	Norseal Graphite	1 thick	Under forend
Eye viewer	Norseal Graphite	0.5 thick	Around body of eye viewer

## Hardware

		Make / type / positions	Size (mm)	Fixing details (dimensions in mm)
Hinges		3No. Monarch M433 Class 13 S/S Roller Bearing Butt Hinge	102 x 32 blade size	5 x 30 screws included with hinge to leaf and frame
Locking mechanism		Winkhaus AV2 /AV2E Ref AV2-F 2070/45 92/8 M2	20 wide	4.2 x 50 screws into leaf
Keeps	Upper & lower	2No. Winkhaus F24-908W (Ref: 4933948)	24 x 175	4No. 4.2 x 30 screws into frame
	Centre	1No. Winkhaus F24-908W (Ref: 4937125)	24 x 240	4No. 4.2 x 30 screws into frame
Cylinder Lock / Cylinder Protection / Handle		<u>Tested configuration</u> Handle: HOPPE Atlanta Security Lever Handle Set (3683468) Cylinder: Yale Euro Profile Thumb Turn Cylinder (KMT3030) Cylinder protection: Integral to handle		
		Or an alternative cylinder and handle combination can be used that meets the requirements of PAS 24:2016 as stated below: <ul style="list-style-type: none"> <li>• Cylinder certified to BS EN 1303:2015 including Cylinder Vulnerability Assessment</li> <li>• Cylinder certified to TS 007:2014 – 3 star level</li> <li>• Cylinder certified to Sold Secure – Gold or Diamond level</li> <li>• Cylinder certified to PAS 24:2016 Annex A</li> </ul> If cylinder used is 1 star level to TS 007:2014, additional protection is required from the handle and/or additional cylinder protection to achieve a total minimum 3 star level: <ul style="list-style-type: none"> <li>• Combination of handle, cylinder &amp; cylinder protection (if applicable) to have a minimum combined total of 3 star rating to TS 007:2014 (e.g. 1 star cylinder + 2 star handle <u>or</u> 1 star cylinder + 2 star cylinder protection)</li> </ul>		
Door closer		Dorma TS97 340x 50 x 40 body size Dorma TS93 275 x 60 x 53 body size Dorma TS92 281 x 65 x 47 body size		
Letterplate		Yale Postmaster TS008 Letterplate – FD30 Fire Rated <ul style="list-style-type: none"> <li>• Installation height between 400mm – 1200mm</li> </ul>		
Door viewer		Yale Ref 314 Ref UKFDDOORVIEWCHR Note – Not assessed as part of PAS24 – please note compliance with TS002 would be required order to satisfy Secured by Design specification	15 Dia	Fitted minimum 100 from edge of door leaf

## SCOPE OF CERTIFICATION

### Enhanced Security Doorset to PAS24:2016 (with Fire Performance)

Manufacturer of Enhanced Security Doorsets with additional certified Fire Performance  
in accordance with BM TRADA Q-Mark Scheme requirements.  
(Check with Secured by Design to ensure compliance with any additional requirements)

#### Sentry Doors Limited

Brooklands Road  
Carcroft  
Doncaster  
DN4 7BA



This scope of certification supports

**Certificate Number 050/097**

The validity of this scope document should be checked against the current schedule of the Company's certification listed on the BM TRADA website [www.bmtrada.com](http://www.bmtrada.com).

Completed: **M. Chorlton**

A handwritten signature in black ink, appearing to read 'M. Chorlton'.

Checked: **P. Wren**

A handwritten signature in black ink, appearing to read 'P. Wren'.

Specification: Issue: 2 ; Date: 23 April 2020

Issue: 1

Date: **01 May 2020**

Details: **First issue of scope.**

Specification Reference **D297-001**

Test evidence is held on file by BM TRADA

Product Name:

**Strebord® and Stredor® Entrance Door System Range**  
**Inward Opening, Falcon Single Leaf Doorset with**  
**Timber Frame**

This document remains the intellectual property of BM TRADA. It shall not be made available to another person or company without the prior written permission of BM TRADA.

**PAS 24:2016 - Classification 'D'**

**FD30 Fire Certification**  
**BM TRADA Q-Mark Certificate 006/879**  
**Field of Application Reference WF407090 rev A**

**This document remains the intellectual property of BM TRADA. It shall not be made available to another person or company without the prior written permission of BM TRADA.**

All Q-Mark certified doorsets must have evidence to demonstrate that the profiles, components and manufacturing procedures used meet the requirements of the appropriate material specific standards: BS 644 (timber); BS 4873 (aluminium); BS 6510 (steel); BS 7412 (PVC-U); BS 8529 (composite). Any changes required to the specifications or parameters within this scope must be agreed by Warringtonfire Testing and Certification Limited relative to both the Enhanced Security certification and Fire certification constraints prior to acceptance.

#### Weather rating

BS6375 part 1 Exposure category **800U** (on largest specimen)

#### Maximum door leaf size

Open in (not including frame) – 44mm Blank

1047mm wide x 2402mm high (FD30)

Open in (not including frame) – 54mm Blank

1047mm wide x 2402mm high (FD30)

Open in (not including frame) – 44mm Blank

1047mm wide x 2402mm high (FD30)

Open in (not including frame) – 54mm Blank

1047mm wide x 2402mm high (FD30)

Door edge gaps: Minimum 2mm / Maximum 4mm



## Leaf Options

### Strebord® 44mm

	Material/type	Dimensions (mm)	Minimum Density (kg/m <sup>3</sup> )
Core	Strebord® 44mm	44 thick	570
Lippings	Sapele, Oak, Meranti, Ash, Mahogany, Maple, Utile, Beech, Walnut, Wenge, European Cherry, KSK, Strelip® – 44 wide	6 – 18 thick (lipped all 4 sides) Head increased to 18-23 thick if using a concealed overhead closer	640
Lipping Adhesives	PU / PUR		

### Stredor® 44mm

	Material/type	Dimensions (mm)	Minimum Density (kg/m <sup>3</sup> )
Core	Stredor® 44mm (Ply faced only)	44 thick	Material range 480 - 600
Lippings	Sapele, Oak, Meranti, Ash, Mahogany, Maple, Utile, Beech, Walnut, Wenge, European Cherry, KSK, Strelip® – 44 wide	6 – 19 (lipped all 4 sides)	640
Lipping Adhesives	PU / PUR		

### Strebord® 54mm

	Material/type	Dimensions (mm)	Minimum Density (kg/m <sup>3</sup> )
Core	Strebord® 54mm	54 thick	549
Lippings	Sapele, Oak, Meranti, Ash, Mahogany, Maple, Utile, Beech, Walnut, Wenge, European Cherry, KSK, Strelip® – 54 wide	6 – 18 thick (lipped all 4 sides) Head increased to 18-23 thick if using a concealed overhead closer	640
Lipping Adhesives	PU / PUR		

### Stredor® 54mm

	Material/type	Dimensions (mm)	Minimum Density (kg/m <sup>3</sup> )
Core	Stredor® 54mm (Ply faced only)	54 thick	Material range 480 - 600
Lippings	Sapele, Oak, Meranti, Ash, Mahogany, Maple, Utile, Beech, Walnut, Wenge, European Cherry, KSK, Strelip® – 54 wide	6 – 18 (lipped all 4 sides)	640
Lipping Adhesives	PU / PUR		

## Door leaf decoration

	Material/type	Dimensions (mm)	Minimum Density (kg/m <sup>3</sup> )
Decorative facings	Paint/paper/foils	0.5 (max)	-
	Timber veneers / PVC or Plastic laminates	2.0 (max)	-
Decorative grooves	Grooves are allowed in vertical or horizontal orientation and requires infill	10 (max) x 10 (max) 95 (min) from edges and 240 (min) spacing	-
Decorative groove infill	Hardwood timber	10 (max) x 10 (max) Grooved (max) 5 (w) x 4 (d)	640

## Door frame

	Material / type	Dimensions (mm)	Minimum Density (kg/m <sup>3</sup> )
Head / Jamb	Redwood, Poplar, Sapele, Oak, Meranti, Ash, Mahogany, Maple, Utile, Beech, Walnut, Wenge, European Cherry, KSK, Streframe® E	90 x 29 (Excluding stop) 15 high stop (Integral or planted)	510
Rebate	Single Type (Formed by stop)	15 high	-
Drop Seal (Optional)	Sealed Tight Solutions ST422		-
Threshold options	Sealed Tight Solutions STH004 or; Exitex MXS/FS15 or; Stormguard Slimline	62 x 15 62 x 15 62 x 15	- - -
Joints - Options	Mortice & Tenon, Half Lapped, Mitre jointed or butt jointed with adhesive and mechanical fixings		-
Adhesive	PVA Adhesive D4 (Würth or Morrells)	-	-

#### Intumescent seals

	Make / type	Size (mm)	Location
Door edges	Not Required		-
Frame reveal:	Strebord® 44 & Stredor® 44: 2No. Sealed Tight Solutions Ltd ST104FO	10 x 4	5mm either side of rebate platform centreline
	Strebord® 54 & Stredor® 54: 2No. Sealed Tight Solutions Ltd ST154FO	15 x 4	5mm either side of rebate platform centreline
Seal continuity	Partially interrupted by hardware		

#### Perimeter sealing details

	Make / type	Size (mm)	Location
Door edges	None Fitted		
Frame reveal	Optional Sealed Tight Solutions Ltd ST1009 environmental seal may be fitted to rebate upstand. Note: Evidence for any environmental performance is the sole responsibility of the doorset manufacturer and is not covered by the Q-Mark certification scheme.		
Seal continuity	N/A		

## Door Leaf Glazing

	Make / type / size (mm)	Location (dimensions in mm)
Glass configuration	12 thick monolithic glass Pyrobelite 9EG or; 15 thick monolithic glass Pyrostop 30-10	
	<p><i>All glazing used within a Q-Mark certified enhanced security doorset with fire performance must comply (as applicable) with:</i></p> <ul style="list-style-type: none"> <li><i>All Insulating Glass Units to be manufactured under 3<sup>rd</sup> party certification to EN 1279 part 2 &amp; part 6.</i></li> <li><i>All glazing to have at least 1 pane of laminated glass conforming to EN 356 class P1A or higher.</i></li> <li><i>All glazing to be identified in the fire test report, field of application, assessment or extended application (EXAP) report for this doorset.</i></li> </ul>	
Maximum Area and position	0.6m <sup>2</sup> 150mm (Min) from leaf edges and 140mm (Min) between apertures	
Glazing Aperture Liner	Strebord® 44 and Strebord® 54: 6mm hardwood (Min density 640 kg/m <sup>3</sup> ) aperture liner required fixed with PU / PUR adhesive. Stredor® 44 and Stredor® 54: Not required	
Glazing Intumescent Liner	Pyrobelite 9EG: Sealed Tight Solutions 14x2GL full perimeter Pyrostop 30-10: Not required	
Glazing Bead	Harwood splayed beads (minimum density 640 kg/m <sup>3</sup> )	Internally & Externally beaded 44mm leaf: 22 (h) x 21 (d) 54mm leaf: 22 (h) x 26 (d) with 8 x 7 bolection return and 16 degree chamfer
Glazing Gaskets	Sealed Tight Solutions 105GT-3-DS	Between glass and glazing beads
Bead fixings	4.0 x 50mm screws fitted 50mm (Max) from each corner and 150mm (Max) centres (Internally & Externally) at 35 – 40 Degrees to the vertical	

## Hardware

	Make / type / positions	Size (mm)	Fixing details (dimensions in mm)
Hinges	3No Royde and Tucker (Ref: H101)	100 x 35 blade size	5No 4.2 x 30 screws to leaf 5No 4.2 x 30 screws to frame
	3No Royde and Tucker (Ref: H208)	101.6 x 35.7 blade size	4No 5 x 32 screws to leaf 4No 5 x 32 screws to frame
	3No Cooke Bros Lift off hinges (Ref. CB7765 – RH/CW) (Ref. CB7766 – LH/ACW)	102 x 37 blade size	4No 4.2 x 30 screws to leaf 4No 4.2 x 30 screws to frame
Hinge positions	Top: 150 – 180 mm from head of leaf to top of hinge Middle: Equally spaced between top and bottom Bottom: 180 – 250mm from foot of leaf to bottom of hinge		
Hinge Intumescent Protection	Not Required Optional Sealed Tight Solutions Ltd 1mm raw graphite under hinge blades		
Locking mechanism	ERA Surefire (Ref: DLSF-45-609-85B)	20 wide	11No. 4 x 30 screws into leaf
Lock Intumescent protection	Sealed Tight Solutions Ltd 1mm raw graphite fitted: Both sides of centre latch body Fully encasing top and bottom lock body Under latch forends		
Keeps	Upper & lower	ERA Surefire L/H Options DKSFHKL23489 (45 Backset) DKSFHKL24274 (48 Backset) R/H Options DKSFHKL23490 (45 Backset) DKSFHKL24273 (48 Backset)	136 x 24 2No. 4.2 x 30 screws into frame

Centre	ERA Surefire L/H Options DKSFCKL23487 (45 Backset) DKSFCKL24272 (48 Backset) R/H Options DKSFCKR23488 (45 Backset) DKSFCKR24271 (48 Backset)	170 x 24	3No. 4.2 x 30 screws into frame
Keep Intumescent protection	Sealed Tight Solutions Ltd 1mm raw graphite must be fitted under all latch keeps		
Handles	Fab & Fix Balmoral		
Cylinder	ERA (Ref Fortress) KM553031	1No. M5 Machine Screw Supplied with Cylinder to suit lock backset	
	Cylinder Intumescent protection not required		
Door Viewer	Sealed Tight Solutions Ltd (Ref: STS4008)		
	Sealed Tight Solutions Ltd 1mm raw graphite lining cutout through leaf must be installed		
Closer (Type 1)	For Strebord® 44 leaf only: Rutland ITS 11204 Concealed Overhead Closer Refer to Lipping specification for this closer type		
	Rutland Intumescent kit (Ref. IP114) must be installed		
Closer (Type 2)	For Strebord® 54 leaf only: Rutland ITS 11205 Concealed Overhead Closer Refer to Lipping specification for this closer type		
	Rutland Intumescent kit supplied with closer must be installed		
Closer (Type 3)	For Strebord® 44, Stredor® 44, Strebord® 54, Stredor® 54: Astra 4000 Concealed Jamb Closer		
	Mounted between 800-1200mm above threshold Providing rebates are tight to the hardware, no intumescent protection is required		
Letter plate (Type 1)	For Strebord® 44, Stredor® 44, Strebord® 54, Stredor® 54: Royde & Tucker LP08 series Fitted between 400 – 1200mm from floor level and minimum 100mm from leaf edge		
	Intumescent Kit supplied with letterplate must be installed (44 or 54mm as per leaf thickness)		
Letter plate (Type 2)	For Strebord® 44, Stredor® 44, Strebord® 54, Stredor® 54: Fab & Fix Nu Mail letterplate with Security Shield (TS008) Fitted between 400 – 1200mm from floor level and minimum 100mm from leaf edge		
	Intumescent protection (Type 1 or 2) must be installed		
	Type 1: Sealed Tight Solutions Ltd 40 x 2mm Graphite (44 thick doors) Sealed Tight Solutions Ltd 50 x 2mm Graphite (54 thick doors)		
	Type 2: Fire & Acoustic Seals td 100 x 40 x 1.3 (Ref FASGP1013) (44 thick doors) Fire & Acoustic Seals td 100 x 50 x 1.3 (Ref FASGP1013) (44 thick doors)		
Decorative Hardware	Push Plates / Kick Plates (Steel, Stainless Steel or Brass; mechanically fixed at max 20% of door leaf area, bonded at max 30% of leaf area. No return on door edges allowed. Pull handles (face fixed or through bolted with max 1mm clearance on stud) Signage (Plastic or metal surface mounted with glue or screws) Signage (2mm Aluminium or 3mm PVC at maximum 45mm diameter flush fitted at a minimum 50mm from any edge)		



012

# CERTIFICATE OF REGISTRATION

This is to certify that

## **Sentry Doors Ltd**

Brooklands Road  
Carcroft  
Doncaster  
DN6 7BA

Meets the requirements of the BM TRADA **Q-Mark Enhanced Security**  
**Door** scheme to **PAS 24:2016 and BS 644:2012 Timber**

**Certificate Number**

097

**Date of Initial Certification**

4 January 2011

**Date of Last Issue**

26 July 2021

**Date of Expiry**

21 January 2024

**Robert Veitch**  
Executive Vice President Fire & Building Products  
Element Materials Technology



## Registration Schedule

<b>Branch</b>	<b>Address</b>
Sentry Doors Ltd	Brooklands Road Carcroft Doncaster DN6 7BA

## Scope

- Sentry 44mm & 54mm Timber Range - Inward & Outward Opening Single Leaf Doorsets with Fanlight
- Sentry Doors 44mm Timber Range - Inward and Outward Opening Single Leaf Timber Doorset
- Strebord© and Stredor© Entrance Door System Range - Inward Opening, Falcon Single Leaf Doorset with Timber Frame
- Winkhaus Timber System Range - Inward & Outward Opening, Halspan Single Door Leaf with Timber Frame
- Winkhaus Timber System Range - Inward & Outward Opening, Halspan Double Door Leaf with Timber Frame



012

# CERTIFICATE OF REGISTRATION

This is to certify that

## **Sentry Doors Ltd**

Brooklands Road  
Carcroft  
Doncaster  
DN6 7BA

Meets the requirements of the BM TRADA **Q-Mark Fire Door  
Manufacture** scheme to **STD 006**

**Certificate Number**

879

**Date of Initial Certification**

31 July 2015

**Date of Last Issue**

26 July 2021

**Date of Expiry**

21 January 2024

**Robert Veitch**  
Executive Vice President Fire & Building Products  
Element Materials Technology

## Registration Schedule

<b>Branch</b>	<b>Address</b>
Sentry Doors Ltd	Brooklands Road Carcroft Doncaster DN6 7BA

## Scope

### Primary Field of Application (FoA) Reports (owned by this certified company)

Either used in isolation, or can be used in conjunction with an appropriate associated document for this company, providing that the FoA report allows it and that both documents are compatible with each other. Where more than one primary FoA is listed for the same doorset type, they cannot be mix and matched, only one FoA is to be chosen and followed precisely.

FoA Report	Rev	Owned by Certified Company named on this scope	Doorset Description	Rating	Test Type
Chilt/A13067	E	Sentry Doors Ltd	30 Minutes Fire Resistant Doorsets Glazed and unglazed	30min	BS476 Part 22
WF 403069	B	Sentry Doors Ltd	60 Minutes Fire Resistant Doorsets Glazed and unglazed	60min	BS476 Part 22

### Primary Field of Application (FoA) Reports (owned by and cascaded by a System Supplier)

The revision status of each FoA can be verified on the BM TRADA website under each System Supplier's certification entry. They are either used in isolation, or can be used in conjunction with an appropriate associated document for this company, providing that the FoA report allows it and that both documents are compatible with each other. Where more than one primary FoA is listed for the same doorset type, they cannot be mix and matched, only one FoA is to be chosen and followed precisely.

FoA Report	System Supplier owner of FoA Report	Doorset Description	Rating	Test Type
FEA/F98164	Pacific Rim Wood Ltd	Flamebreak 30 Glazed and unglazed	30min	BS476 Part 22
Chilt/A02141	Pacific Rim Wood Ltd	Flamebreak 60 Glazed and unglazed	60min	BS476 Part 22
Chilt/A01204	Halspan Ltd	Optima 30 Glazed and unglazed	30min	BS476 Part 22
FEA/F01205	Halspan Ltd	Optima 60 Glazed and unglazed	60min	BS476 Part 22
Chilt/A13242	Halspan Ltd	Halspan XT30 and IT30 - 30 minute fire resisting doorsets (Glazed and Unglazed)	30min	BSEN 1634-1
Chilt/A13227	Halspan Ltd	Halspan XT60, IT60, XT60 Head Rail and XT60R (formerly Pro Tech 60) 60 minute fire resisting doorsets (Glazed and Unglazed)	60min	BSEN 1634-1
Chilt/A02066	Falcon Panel Products Ltd	Strebord® 35+ Doorsets (Strebord® 35 blank only) (Glazed or Unglazed)	30min	BS476 Part 22
Chilt/A02066	Falcon Panel Products Ltd	Strebord® 38+ Doorsets (Strebord® 38 blank only) (Glazed or Unglazed)	30min	BS476 Part 22
Chilt/A02066	Falcon Panel Products Ltd	Strebord® 44 Doorsets (Strebord® 44 blank only) (Glazed or Unglazed)	30min	BS476 Part 22
Chilt/A02067	Falcon Panel Products Ltd	Strebord® 54 Doorsets (Glazed or unglazed)	60min	BS476 Part 22
BMT/CNA/F15159	Falcon Panel Products Ltd	Stredor® 30 Minute Fire Resisting Doorsets (Glazed and unglazed)	30min	BS476 Part 22
WF377027	Falcon Panel Products Ltd	Stredor® 60 Minute Fire Resisting Doorsets (Glazed and unglazed)	60min	BS476 Part 22
Chilt/A09104	Falcon Panel Products Ltd	Strebord® 44 Panelled Doorsets (Glazed and unglazed)	30min	BS476 Part 22
Chilt/A10152	Falcon Panel Products Ltd	Strebord® 54 Panelled Doorsets (Glazed and unglazed)	60min	BS476 Part 22
WF407090	Falcon Panel Products Ltd	Strebord® 44 30 minute Front Entrance Doorsets (Glazed or Unglazed)	30min	BS476 Part 22
WF407090	Falcon Panel Products Ltd	Strebord® 54 30 minute Front Entrance Doorsets (Glazed or Unglazed)	30min	BS476 Part 22
WF407090	Falcon Panel Products Ltd	Stredor® 44 30 minute Front Entrance Doorsets (Glazed or Unglazed)	30min	BS476 Part 22
WF407090	Falcon Panel Products Ltd	Stredor® 54 30 minute Front Entrance Doorsets (Glazed or Unglazed)	30min	BS476 Part 22
WF428364	Falcon Panel Products Ltd	Stredor® 44 E30 FED (EXAP) Fire Resisting and Smoke Control Doorsets (Glazed or Unglazed)	30min	BSEN 1634-1
WF428364	Falcon Panel Products Ltd	Stredor® 44 E130 FED (EXAP) Fire Resisting and Smoke Control Doorsets (Glazed or Unglazed)	30min	BSEN 1634-1
WF428387	Falcon Panel Products Ltd	Stredor® 44 E30 FED (EXAP) 30 Minute (integrity) Fire Resisting Doorsets (Glazed or Unglazed)	30min	BSEN 1634-1
WF428388	Falcon Panel Products Ltd	Stredor® 44 E130 FED (EXAP) 30 Minute (integrity and insulation) Fire Resisting Doorsets (Glazed or Unglazed)	30min	BSEN 1634-1
BMT/CNA/F15084	Winkhaus UK Ltd	Winkhaus Timber Frame with Halspan Blank (Glazed or unglazed)	30min	BSEN 1634-1
BMT/CNA/F15084	Winkhaus UK Ltd	Winkhaus Timber Frame with Halspan Blank (Unglazed only)	60min	BSEN 1634-1

**Test Reports**

*Test reports cannot be used in conjunction with any primary FoA reports, other test reports or associated documents. They must be followed precisely without any deviation whatsoever. No specification or parameter changes are allowed at all from that stated within the test report such as size, shape, design, glazing, leaf/frame specification, hardware etc.*

Test Report	Owner of Test Report	Doorset Description	Rating	Test Type
WF 386073 (Doorset A)	Sentry Doors Ltd	60 Minutes Fire Resistant Doorset (Unglazed)	60min	BS476 Part 22
WF 386073 (Doorset B)	Sentry Doors Ltd	60 Minutes Fire Resistant Doorset Unglazed	60min	BS476 Part 22
Chilt/RF11065 AR1	Sentry Doors Ltd	60 Minutes Fire Resistant Doorset Glazed	60min	BS476 Part 22
WF 387892 (Doorset A)	Sentry Doors Ltd	60 Minutes Fire Resistant Doorset Glazed	60min	BS476 Part 22
WF 327444	Sentry Doors Ltd	30 Minutes Fire Resistant Doorset Glazed	30min	BS476 Part 22
WF415699	Sentry Doors Ltd	30 Minutes Fire Resistant Doorsets Glazed	30min	BS476 Part 22
WF415700	Sentry Doors Ltd	30 Minutes Fire Resistant Doorsets Glazed	30min	BS476 Part 22
WF 420131	Sentry Doors Ltd	60 Minutes Fire Resistant Doorsets Unglazed	60min	BS476 Part 22

# SECURED BY DESIGN LICENCE HOLDER

THIS IS TO CERTIFY THAT

**Sentry Doors Limited**

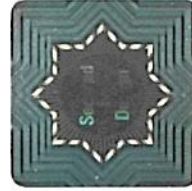
OF

**Brooklands Road, Carcroft, Doncaster, South Yorkshire, DN6 7BA**

HOLDS A SECURED BY DESIGN LICENCE  
VALID IN CONJUNCTION WITH THE CURRENT SCHEDULE UNTIL

**6th June 2022**

PLEASE REFER TO [HTTPS://WWW.SECUREDBYDESIGN.COM/MEMBER-COMPANIES/SBD-MEMBERS](https://www.securedbydesign.com/member-companies/sbd-members)  
FOR THE CURRENT SCHEDULE INFORMATION



*G. Ferguson*

**GUY FERGUSON**  
CEO, POLICE CRIME PREVENTION INITIATIVES LIMITED

DATE

**7th June 2021**

**Secured by Design**



**Official Police Security Initiative**





Constructionline  
Silver Member

# CERTIFICATE OF MEMBERSHIP

Sentry Doors Ltd

Registration No: 183063

Date Issued: 18 January 2022

*This certifies that the member named above has met pre-qualification requirements appropriate to public and private sector procurement.*

A supplier's verification status is dynamic, this certificate proves the Supplier was verified to the named level on the day stated only. For the current status please check the Constructionline platform.



# Certificate of Approval

This is to certify that the Management System of:

## Sentry Doors Ltd

Brooklands Road, Carcroft, Doncaster, DN6 7BA, United Kingdom

has been approved by Lloyd's Register to the following standards:

### ISO 9001:2015

Approval number(s): ISO 9001 – 0004209

#### The scope of this approval is applicable to:

Manufacture, assembly and spraying of doors, door frames and door sets, processing and modification of fire doors, to customer specifications. Stockholding of softwood and hardwood doors, internal and external.



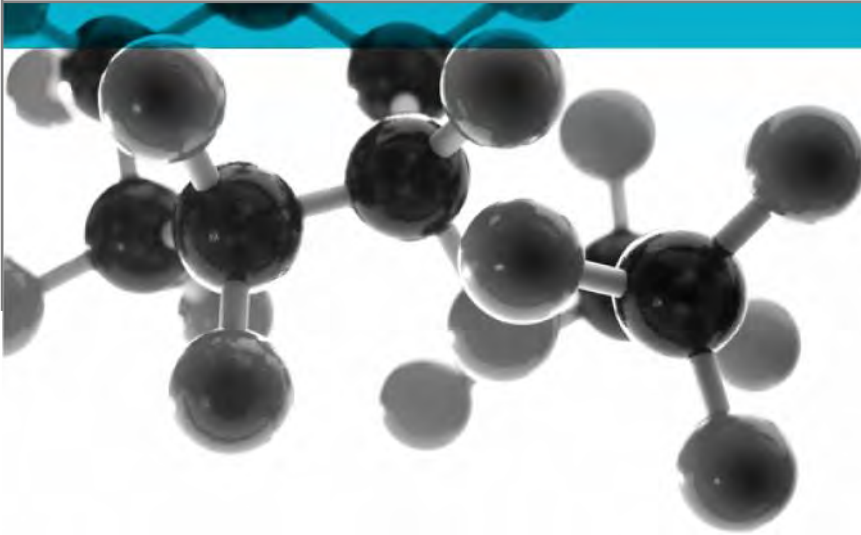
**David Derrick**

Area Operations Manager UK & Ireland

Issued by: Lloyd's Register Quality Assurance Limited

Testing, calibrating, advising.

# BS EN 1634-3: 2004



**Test of: Single Leaf Doorset**

**Smoke control test for door and shutter assemblies.**

A Report To:  
Sentry Doors Ltd  
Brooklands Road  
Adwick-le-Street  
Carcroft  
Doncaster  
DB6 7BA

Document Reference:  
WYC384111

**Date:** 28/07/2017

**Copy:** 1

**Issue No.:** 1

Page 1

## Contents

WYC384111/A .....	3
WYC384111/B .....	4
Introduction .....	5
2 Specimen verification .....	5
3 Description of supporting construction.....	5
4 Description of construction .....	6
5 Pre-test measurements .....	9
6 Field of direct application of test results.....	10





# Results of Test: WYC384111/A

## Sentry Doors Ltd

Brooklands Road  
Adwick-le-Street  
Carcroft  
Doncaster  
DB6 7BA

This document confirms that performance testing was conducted on 8 June 2017. Testing was conducted to BS EN 1634-3: 2004 Incorporating corrigendum no. 1 Fire resistance and smoke control tests for door and shutter assemblies, openable windows and elements of building hardware – Part 3: Smoke control test for door and shutter assemblies.

The following results were achieved:

Product tested	Single leaf doorset (Sentry Timber Range)		
Test Detail	Threshold taped		
<b>Summary of testing procedure</b>			<b>Result</b>
<b>BS EN 1634-3: 2004</b>	<b>Pressure (Pa)</b>	<b>Leakage (m<sup>3</sup>/h)</b>	<b>Leakage (m<sup>3</sup>/m/h)</b>
<b>Results under positive chamber (door leaf opening away from chamber)</b>	<b>10</b>	<b>2.77</b>	<b>0.55</b>
	<b>25</b>	<b>4.41</b>	<b>0.88</b>
	<b>50</b>	<b>5.38</b>	<b>1.08</b>
<b>Results under negative chamber (door leaf opening away from chamber)</b>	<b>10</b>	<b>1.60</b>	<b>0.32</b>
	<b>25</b>	<b>2.52</b>	<b>0.50</b>
	<b>50</b>	<b>3.87</b>	<b>0.77</b>

Testing was carried out at ambient temperature only: temperature of the test chamber was measured using a calibrated digital thermometer before and after testing. From approved document B Fire Safety, doors should have a leakage rate not exceeding 3m<sup>3</sup>/m/hour (head and jamb only) when tested at 25Pa.

The perimeter length of gap was 5m.

The results relate only to the specimens tested, as detailed in the technical specification

Issued by:  
Martin Durham  
Lab Manager

Authorised by:  
Lee Grant-Riach  
Senior Technical Officer  
Issue date: 28<sup>th</sup> July 2017

### Exova (UK) Ltd (trading as Exova)

Chiltern House, Stocking Lane, Hughenden Valley, High Wycombe, HP14 4ND, UK

Tel: 01494 569800 Fax: 01494 564895

Web: [www.exova.com](http://www.exova.com) Email: [europa@bmrada.com](mailto:europa@bmrada.com)

This document is confidential and remains the property Exova (UK) Ltd



1762



# Results of Test: WYC384111/B

## Sentry Doors Ltd

Brooklands Road  
Adwick-le-Street  
Carcroft  
Doncaster  
DB6 7BA

This document confirms that performance testing was conducted on 8 June 2017. Testing was conducted to BS EN 1634-3: 2004 Incorporating corrigendum no. 1 Fire resistance and smoke control tests for door and shutter assemblies, openable windows and elements of building hardware – Part 3: Smoke control test for door and shutter assemblies.

The following results were achieved:

Product tested	Single leaf doorset (Sentry Timber Range)		
Test Detail	Threshold untaped		
<b>Summary of testing procedure</b>			<b>Result</b>
<b>BS EN 1634-3: 2004</b>	<b>Pressure (Pa)</b>	<b>Leakage (m<sup>3</sup>/h)</b>	<b>Leakage (m<sup>3</sup>/m/h)</b>
<b>Results under positive chamber (door leaf opening away from chamber)</b>	10	2.80	0.47
	25	4.58	0.78
	50	5.79	0.98
<b>Results under negative chamber (door leaf opening away from chamber)</b>	10	2.03	0.34
	25	3.57	0.61
	50	4.50	0.76

Testing was carried out at ambient temperature only: temperature of the test chamber was measured using a calibrated digital thermometer before and after testing. From approved document B Fire Safety, doors should have a leakage rate not exceeding 3m<sup>3</sup>/m/hour when tested at 25Pa.

The perimeter length of gap was 5.9m.

The results relate only to the specimens tested, as detailed in the technical specification

Issued by:  
Martin Durham  
Lab Manager

Authorised by:  
Lee Grant-Riach  
Senior Technical Officer  
Issue date: 28<sup>th</sup> July 2017

### Exova (UK) Ltd (trading as Exova)

Chiltern House, Stocking Lane, Hughenden Valley, High Wycombe, HP14 4ND, UK

Tel: 01494 569800 Fax: 01494 564895

Web: [www.exova.com](http://www.exova.com) Email: [europa@bmtrada.com](mailto:europa@bmtrada.com)

This document is confidential and remains the property Exova (UK) Ltd



1762



## Introduction

Performance testing to BS EN 1634-3:2004 incorporating corrigendum no. 1 was conducted on the doorset on 8 June 2017. The specimen was configured as a single leaf, single acting doorset (inward opening). The specimen was installed opening out of the test chamber. In accordance with BS EN 1634-3: 2004 section 10.1.1, the leaf was pre-cycled before the smoke leakage test.

## 2 Specimen verification

The specimen was delivered to Exova on 5<sup>th</sup> June 2017. The component parts of the specimens were identified based on nominal information provided by the sponsor. These details are outlined in the specimen construction section of this report (section 4).

### 2.1 Conditioning

The specimen was conditioned for a minimum of 3 days at 21°C and 61% relative humidity, in accordance with EN 1363-1.

### 2.2 Sampling

Not Applicable

## 3 Description of supporting construction

The partition was constructed of nominal 50mm x 30mm steel studs at 600mm centres with one layer of 15mm plasterboard on each face. The stud wall cavities were filled with 50mm thick Rockwool insulation.

#### 4 Description of construction

The specimen was identified as a single leaf doorset (Sentry Timber Range). The overall frame dimensions were 1006mm wide x 2107mm high x 92mm deep and leaf dimensions were 926mm wide x 2040mm high x 44mm thick. The specimen was latched but not locked.

##### Door leaf

		Material/type/reference	Dimensions (mm)	Density (kg/m <sup>3</sup> )
<b>Stiles</b>		Mixed Tropical Hardwood*	1No. 26 thick x 35 deep	480*
<b>Rails</b>		Mixed Tropical Hardwood*	1No. 26 thick x 35 deep incorporating a 9 x 9 tongue to locate into the core material	480*
<b>Core</b>		Parasoriantes falcatera / Albisia Falcatta / Orchroma Pyramidale*	3 layers of lamels laid in alternate directions – grooved to accept the stiles and rails*	140-360*
<b>Facings</b>		Plywood*	3.6 thick	520-610*
<b>Lippings</b>		Sapele	6 thick	640*
<b>Adhesive</b>	<b>Facing</b>	PVA*	-	-
	<b>Core</b>	Urea formaldehyde, resorcinol formaldehyde, PU	-	-
	<b>Lipping</b>	PVA*	-	-

\* As stated by sponsor, not checked by laboratory

## Door frame

	Material/type/reference	Dimensions (mm)	Density (kg/m <sup>3</sup> )
<b>Head &amp; jambs</b>	Engineered Laminated Redwood*	92 x 56	505*
<b>Rebate</b>	Single type	48 x 16	-
<b>Threshold</b>	Sapele	92 x 13	640*
<b>Threshold plate</b>	Stormguard (Ref. Slimline)*	61 x 18	-
<b>Joints</b>	Mortice and tenon with screws <i>For head and jambs joints</i>	-	-
	Butt jointed and screwed <i>For threshold and jambs joints</i>	-	-
<b>Adhesive</b>	Duralock D4*	-	-

\* As stated by sponsor, not checked by laboratory

## Perimeter sealing details

	Material/type/reference	Size (mm)	Location
<b>Door Leaf Edges</b>	None present	-	-
<b>Frame reveal</b>	<b>Head &amp; jambs</b>	Aquamac 21*	9 blade length On rebate upstand
		Pryoplex Rigid Box* Intumescent brush seal	15 x 4 On rebate platform
	<b>Threshold</b>	Integral to Stormguard threshold	5 wide On rebate upstand
		Integral to Stormguard threshold	9 blade length On rebate platform
<b>Seal Continuity</b>	Intumescent brush seal interrupted by hardware	-	-

\* As stated by sponsor, not checked by laboratory

## Hardware

	Material/type/reference	Size (mm)	Fixing details (dimensions in mm)
<b>Hinges</b>	4No. Monarch (Ref. M433)*	102 x 30 blade size	4No. 4 x 30 screws into frame 4No. 3.5 x 50 screws into leaf
<b>Locking mechanism</b>	Yale (Ref. YS170)	16 wide	13No. 3.5 x 50 screws
<b>Keeps - upper &amp; lower</b>	Yale (Ref. Y21652829)*	140 x 25	4No. 4 x 30 screws
<b>Centre</b>	Yale (Ref. Y21652825)*	237 x 40	5No. 4 x 30 screws
<b>Handles</b>	Hoppe Atlanta*	115 lever length	2No. M6 x 60 machine screws
<b>Cylinder</b>	Yale (Ref. KMT3030NP)*	70 length	1No. M5 x 50 machine screw

\* As stated by sponsor, not checked by laboratory

## 5 Pre-test measurements

### 5.1 Operational check

Operability test of 10 manual cycles was completed on the leaf in accordance with BS EN 1634-3: 2004 section 10.1.1.

Minimum angle of opening	30°
Number of operation cycles completed	10

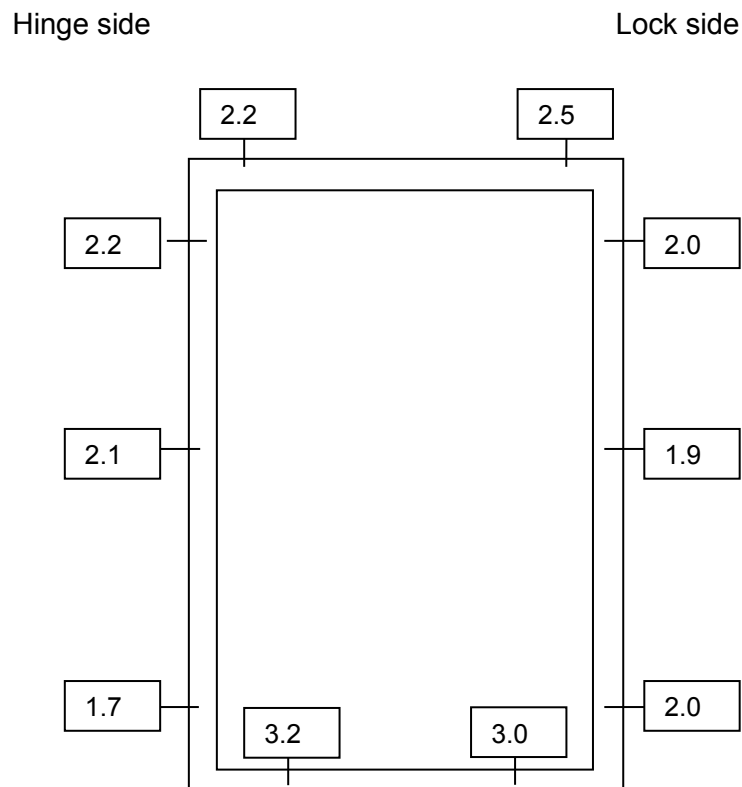
### 5.2 Retention forces

Measured in accordance with BS EN 1634-3: 2004 section 10.1.2.

Opening Forces
44.20 @ handle position

### 5.3 Leaf/frame gaps

The gaps were measured before testing commenced – See diagram below (Gaps were measured within 20mm from corners and at the centre of stiles)



## 6 Field of direct application of test results

The results of the test are directly applicable to similar constructions where one or more of the changes listed in BS EN 1634-3: 2014, Clause 13, are made and the construction continues to comply with that appropriate design code for its stiffness and stability. Other changes are not permitted by the document. A copy of the field of direct application is available from Exova upon request.

---

Document No.: WYC384111  
Author: Martin Durham  
Sponsor: Sentry Doors Ltd

Page No.: 10 of 10  
Issue Date: 28/07/2017  
Issue No.: 1





Notified Body No. 1224

## Certificate of Constancy of Performance

**1224-CPR-1212**

In compliance with Construction Products Regulation 2011 (retained EU law EUR 2011/305) as amended by the Construction Products (Amendment etc.) (EU Exit) Regulations 2019 and the Construction Products (Amendment etc.) (EU Exit) Regulations 2020, this certificate applies to the Construction Product

### Fire Resisting Doorsets

Intended for use in Fire Compartmentation and/or escape routes

Placed on the Market under the Name of

**Sentry Doors Ltd  
Brooklands Road  
Carcroft  
Doncaster  
DN6 7BA**

and produced in the manufacturing plant

**Sentry Doors Ltd, Brooklands Road, Carcroft, Doncaster DN6 7BA**

This certificate attests that all provisions concerning the Assessment and Verification of Constancy of Performance described in Annex ZA of the standard(s)

**EN 16034:2014**

under System 1 for the performance set out in this certificate are applied and that the Factory Production Control conducted by the manufacturer is assessed to ensure the constancy of performance of the construction product.

This certificate was first issued on 22 January 2021 and will remain valid as long as neither the designated standard, the Construction Product, the AVCP methods nor the manufacturing conditions in the plant are modified significantly, or unless suspended or withdrawn by the Approved Product Certification Body.

Valid to: **21 January 2024**



Executive Vice President Fire & Building Products  
Element Materials Technology

Warringtonfire Testing and Certification Limited t/a BM TRADA, Chiltern House, Stocking Lane, High Wycombe, Buckinghamshire, HP14 4ND, UK  
Registered Office: Warringtonfire Testing and Certification Limited, 10 Lower Grosvenor Place, London, SW1W 0EN, UK.  
Reg No. 11371436.

This certificate remains the property of Warringtonfire Testing and Certification Limited. This certificate and all copies or reproductions of the certificate shall be returned to Warringtonfire Testing and Certification Limited or destroyed if requested. Further clarification regarding the scope of this certificate and verification of the certificate is available through BM TRADA or at the above address or at [www.bctrada.com](http://www.bctrada.com)